



## Enhanced 90-Line-T Right Angle

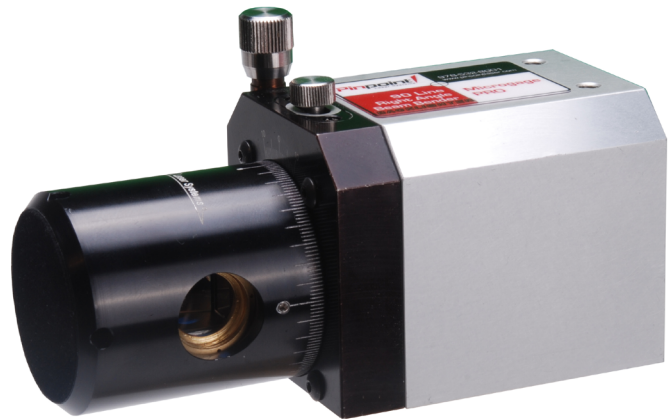
P/N: LINE-90-T

### Applications:

- Square machinery and equipment
- Set and adjust parallel tracks and rails
- Check rim and flange flatness
- Check gantry travel and position
- Monitor and adjust machine tools
- Factory surveying and millwright work

### Features:

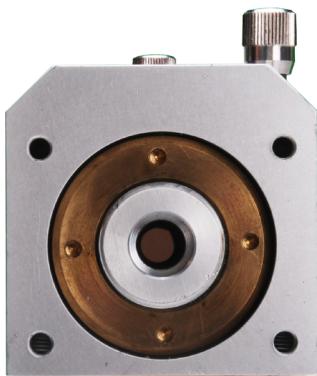
- Precise right angles to  $0.0006^\circ$
- Rear input port for flush placement
- Precision rotation adjustment and lock
- Quality components provide years of use
- $1/4-20$  mounting holes in housing
- Works in all orientations



### About the Enhanced 90-Line-T Right Angle

This is a versatile accessory for checking squareness and parallelism on machinery and equipment. The laser reference beam enters the 90-line, through the back of the housing, and is redirected out of the nose piece at a precise  $90^\circ$  angle. The nose piece, and the  $90^\circ$  exiting beam, can be rotated through a full circle to define a plane. The plane of the laser light can be used for checking planar surfaces and related application. The 90-Line is ideal for establishing parallel lines that are square to the original laser reference beam for checking tracks, rails and guides on machine tools, roll and web alignment and other industrial tasks.

The 90-Line-T is built with a durable, solid aluminum, compact housing with flat reference surfaces and threaded mounting points. The exiting laser beam is square to the incoming beam within  $0.0006^\circ$ , equivalent to 0.001 in., over 8 ft.



1-800-757-5383  
www.pinpointlaser.com

info@pinpointlaser.com • Phone 978-532-8001 • 56 Pulaski Street • Peabody, MA 01960 • USA

Rev. 4/24