



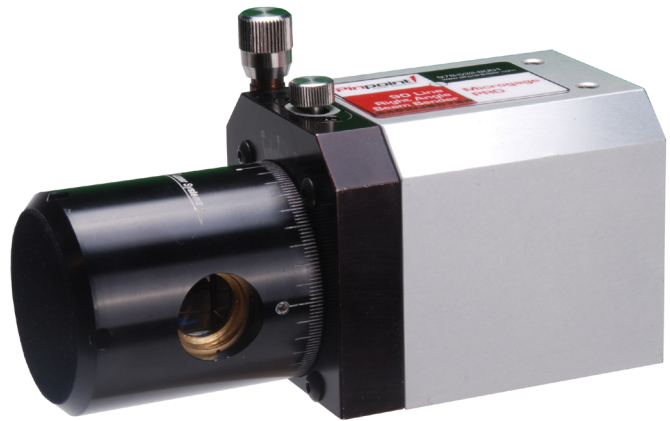
## Enhanced 90-Line-T Right Angle

### Applications:

- Square machinery and equipment
- Set and adjust parallel tracks and rails
- Check rim and flange flatness
- Check gantry travel and position
- Monitor and adjust machine tools
- Factory surveying and millwright work

### Features:

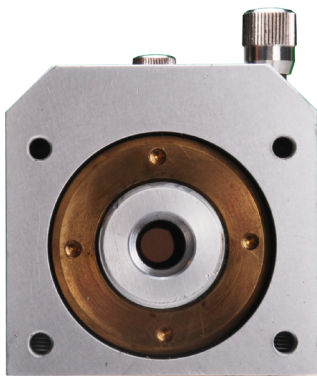
- Precise right angles to  $0.0006^\circ$
- Rear input port for flush placement
- Precision rotation adjustment and lock
- Quality components provide years of use
- $1/4-20$  mounting holes in housing
- Works in all orientations



### About the Enhanced 90-Line-T Right Angle

This is a versatile accessory for checking squareness and parallelism on machinery and equipment. The 90-Line-T redirects the Microgage laser beam by precisely  $90^\circ$  for squaring machinery, adjusting machine tools, positioning slides, and checking gantries. Unlike our traditional 90-Line. The 90-Line-T has the laser enter from the back of the 90-line so the face of the 90-Line can be positioned closer to the alignment process. In addition to these squaring applications, the 90-Line creates precise parallel lines for checking roller alignment, tracks, and mechanical guides.

The 90-Line-T is built with a durable, compact housing that allows the square exiting beam to be turned through a full rotation to create a square reference plane. The exiting laser is square to the incoming beam within  $0.0006^\circ$ , equivalent to  $0.001$  in., over 8 ft.



1-800-757-5383  
[www.pinpointlaser.com](http://www.pinpointlaser.com)

info@pinpointlaser.com • Phone 978-532-8001 • 56 Pulaski Street • Peabody, MA 01960 • USA