



Adjustable Cylindrical Mount

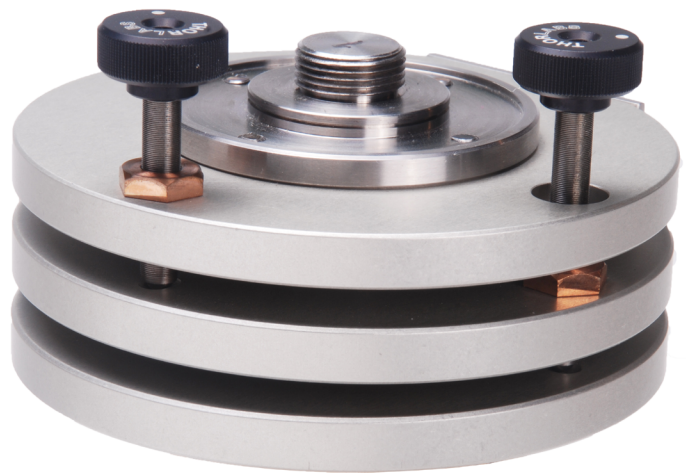
P/N: MNT-ADJC1

Applications:

- Propeller shaft and gearbox alignment
- Align lathes and turning centers
- Position and adjust opposing spindles
- Monitor and adjust machine tools
- Align pumps, pistons and rams
- Align boring, drilling and reaming equipment
- Align lathes and turning centers

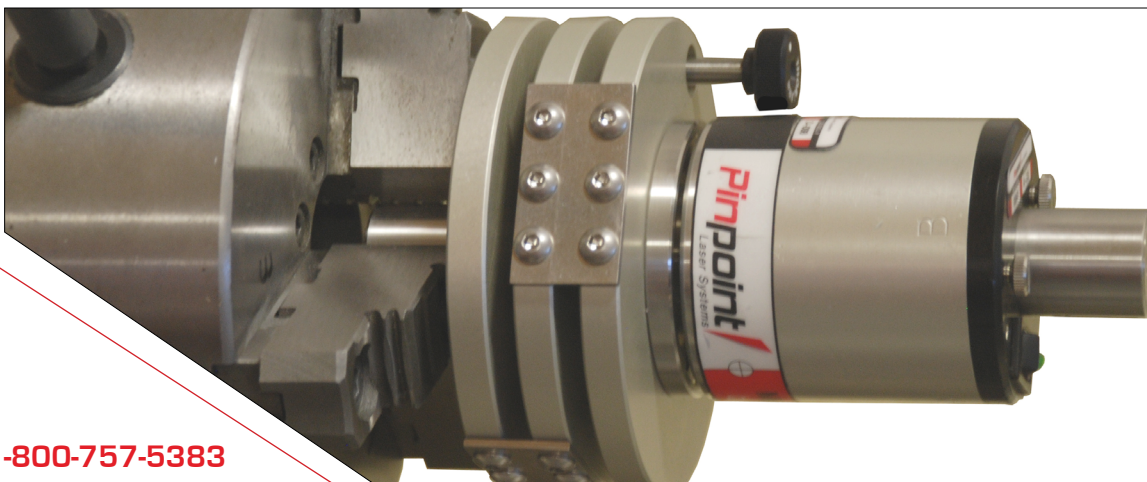
Features:

- Made of machined and hard anodized aluminum
- Rugged stainless steel flex hinges
- 1/4-100 fine adjusters to control X and Y axis
- 4.5" diameter, 1.75" tall
- Customizable base to fit many mounting needs
- Rugged design for years of use



Adjustable Cylindrical Mount

The Adjustable Cylindrical Mount initially designed for aligning a helicopters drive shaft between the main engine and the tail rotor gearbox. However, this design is versatile in that it can be used for lathe and spindle alignment, setting drive shafts, establishing vertical alignment, antenna and array alignment, propeller shaft alignment and many other uses. The mount consists of 3 plates attached by solid hinges. The Cylindrical Microgage Laser is secured to one plate while the other plate is mounted to the machine. The laser can then be adjusted using two precision knobs to direct the laser reference beam into position.



1-800-757-5383
www.pinpointlaser.com

info@pinpointlaser.com • Phone 978-532-8001 • 56 Pulaski Street • Peabody, MA 01960 • USA

Rev. 3/24