



Leveler Rotational Mount

P/N: LVLR-BRK-2D

Applications:

- Aligning machine beds and CNC tools
- Checking machine flatness and run-out
- Aligning press machinery
- Checking robot travel
- Positioning machinery and equipment

Features:

- Precise adjustment screws
- Accurate bearing for high precision
- Adjustable brake locks turning motion
- Reliable mount for laser
- Threaded mount for tripod use
- 1 Year Warranty/Product Support

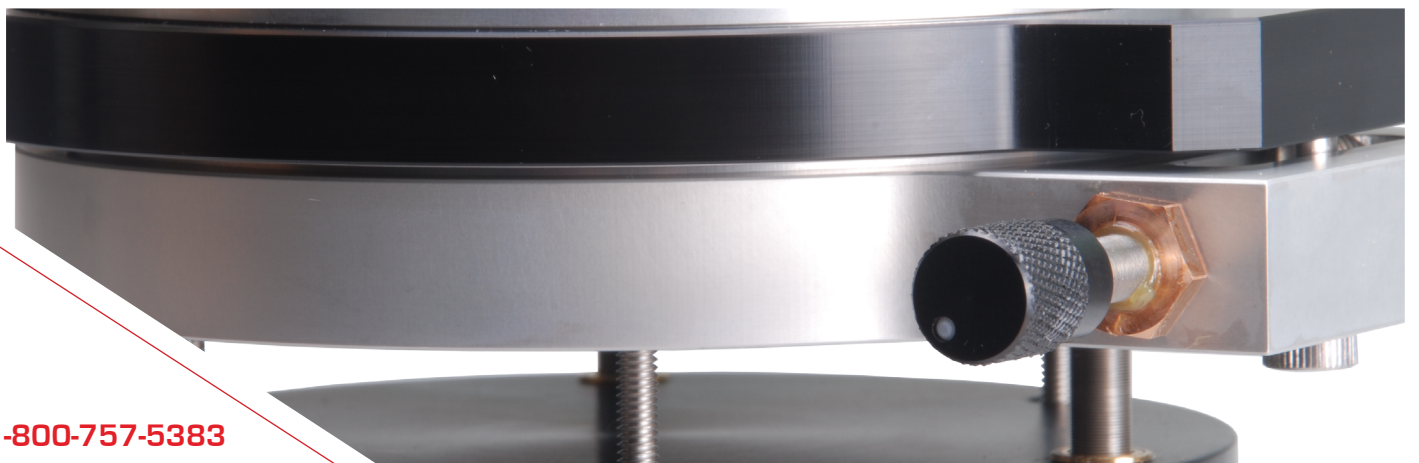


Rotational Mount Only*

About the Leveler Rotational Mount

This mount provides precise planer alignment with fine adjustment capability. The Microgage laser fits securely to this Rotational Mount, which can be turned through a complete rotation to define a flat plane of laser light. This mount is ideal for checking surface flatness, leveling machinery, verifying machine travel, and much more.

Precision adjustment screws allow the user to adjust the laser to an exact plane, which can parallel an existing surface or be adjusted to level. When engaged, a precision adjustment screw controls the exact rotational position of the laser for reliable laser pointing. A unique, internal bearing design delivers exceptional rotational stability, accurate to 0.001 inch over a range of 12 feet.



1-800-757-5383
www.pinpointlaser.com

info@pinpointlaser.com • Phone 978-532-8001 • 56 Pulaski Street • Peabody, MA 01960 • USA

Rev. 3/24