



## Roll Mounting Plate

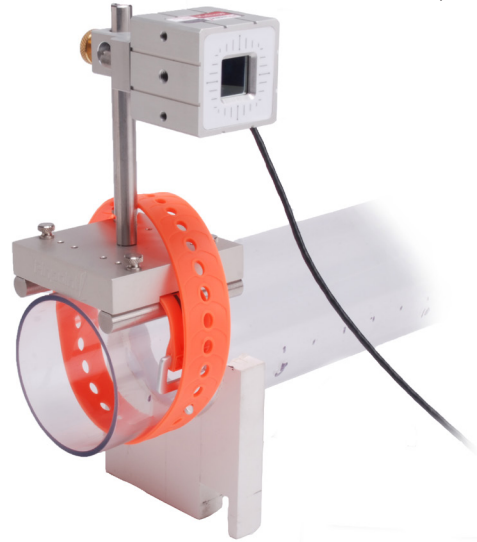
P/N: MNT-ROLL-1

### Applications:

- Mounting for rolls, rams, and shafts
- Aligning idlers nip rolls and webs
- Conveyor and transport alignment
- Verifying roll parallelism
- Propeller and shaft alignment
- Aligning form rolls
- Shaft and gearbox alignment

### Features:

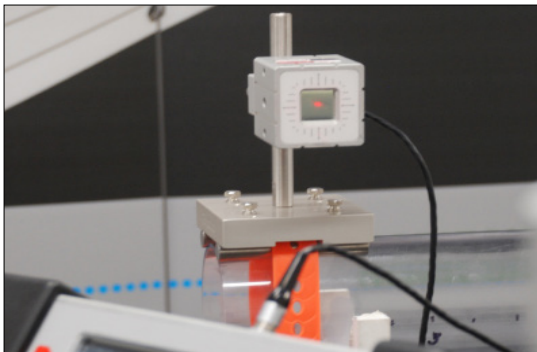
- Adjustable for roll diameter
- Vertical range =  $\pm 4.50$ "
- Adjustable mounting plate to allow a secure attachment to most rolls
- Stainless and delrin contact rails
- Equipped with a removable retaining strap for quick and secure mounting



### About the Roll Mounting Plate

The Roll Mounting Plate supports a Microgage Receiver on a roll surface for measurements of parallelism, crowning, position, and other functions. The mount is adjustable to accommodate rolls of differing diameters, and the plate will always sit on the roll so that its edges are parallel with the roll axis. A variety of bar feet are available and a strap can be added to hold the Roll Mounting Plate to the roll surface.

The Microgage receiver is supported on a standard mounting post for easy height adjustments. A rotational collar allows the receiver to move freely around its mounting post when catching the laser reference beam from various positions.



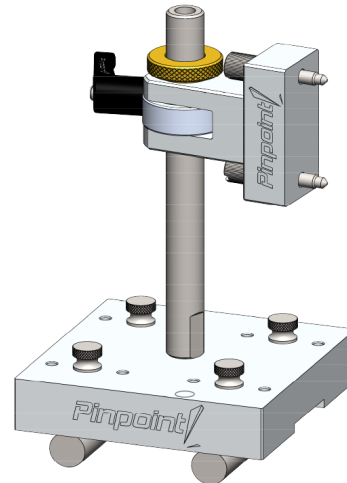
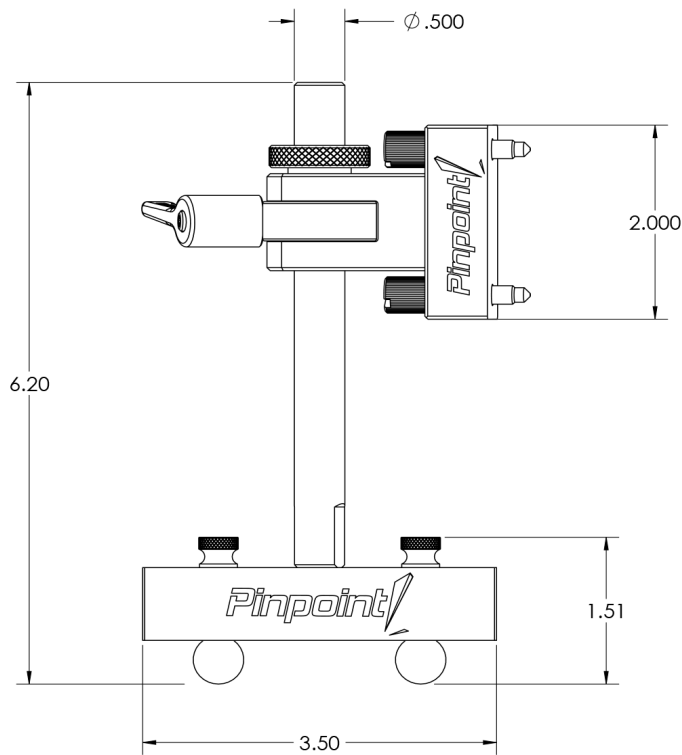
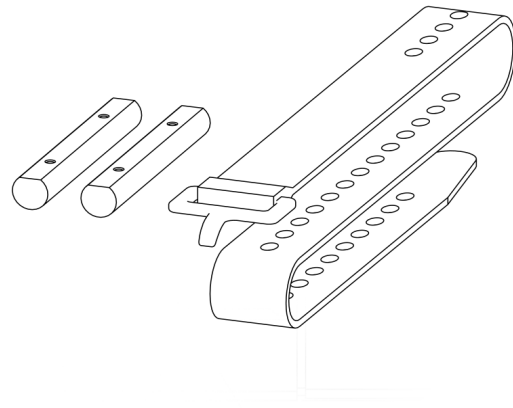
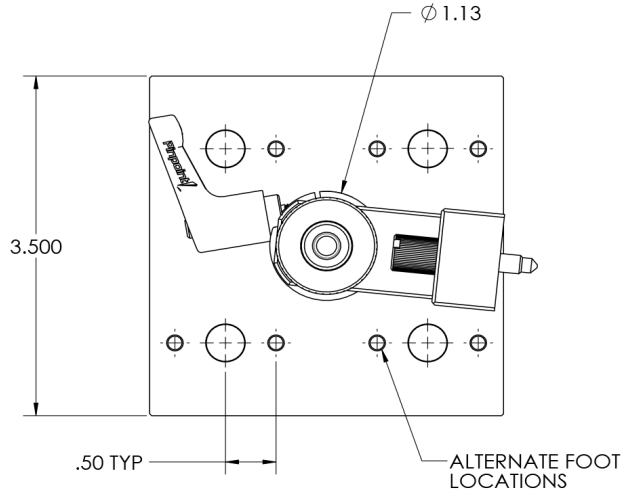
1-800-757-5383  
[www.pinpointlaser.com](http://www.pinpointlaser.com)

info@pinpointlaser.com • Phone 978-532-8001 • 56 Pulaski Street • Peabody, MA 01960 • USA

Rev. 11/25



# Roll Mounting Plate Dimensions & Technical Drawings



1-800-757-5383  
www.pinpointlaser.com

info@pinpointlaser.com • Phone 978-532-8001 • 56 Pulaski Street • Peabody, MA 01960 • USA

Rev. 11/25