



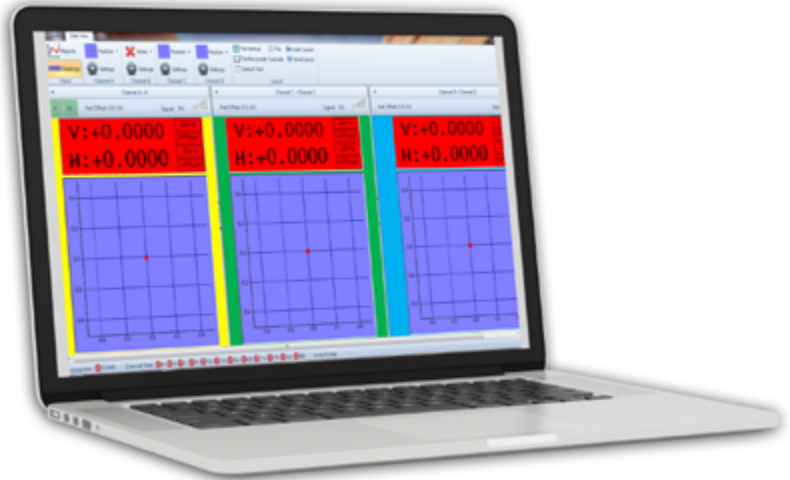
Precision Computer Interface Module: *Pinpoint Capture™ Software*

P/N: PLS-0019-01

About Capture™ Software

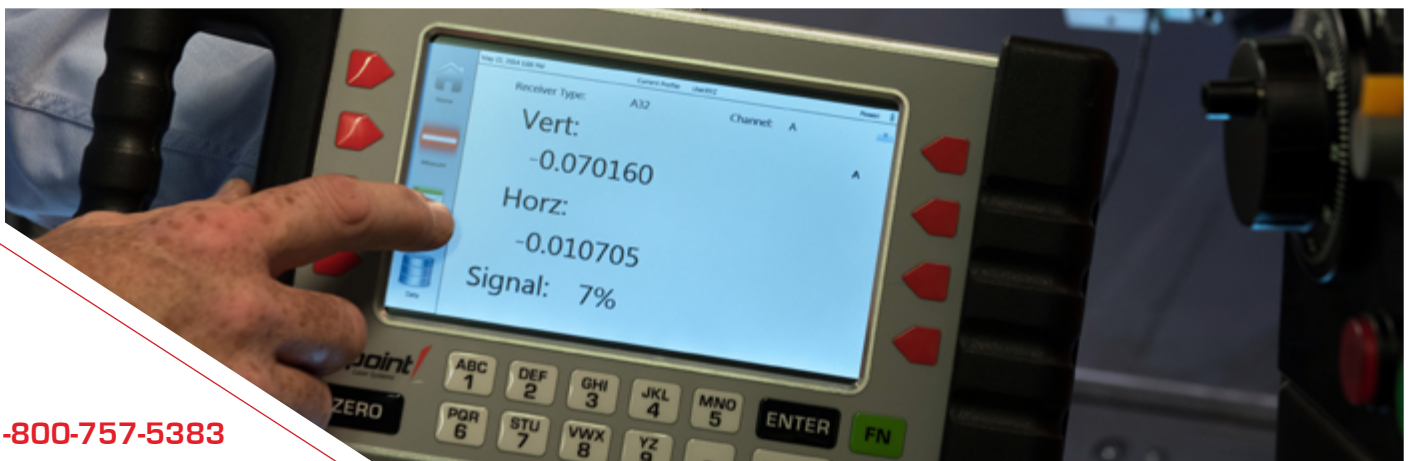
The Computer Interface Module consists of a USB and RS232c interface for the Laser Microgage 2D. Pinpoint Capture™ software is easy to load and use on the computer for selecting and collecting data. This module can be added or removed from the Microgage at anytime by simply disconnecting the interface cable that ties into the back of the Microgage display.

Pinpoint Capture™ software lets you scale measurement readings, apply offsets, change units to millimeters, microns, or your own units, and view the readings in different formats. Limit settings and indicators are also available to assist in alignment steps. A key feature of this software is its ability to record your measurement readings, either in a continuous mode (so many readings per second, minute, hour, etc) or in trigger mode where you can add notes, select data, etc., for each reading event saved. Readings taken from the Pinpoint Capture™ software are easily imported into popular spreadsheet programs such as Excel, Quattro-Pro, or other programs for statistical analysis, charting, plotting, and analysis functions. The Pinpoint Capture™ software operates on Windows and loads easily from a compact disc.



Key features of Capture™ Software

- Real-time data readouts for faster analysis
- Measurement readings can be displayed in many formats
- Readings stored on display can be uploaded
- Readings may be scaled into many different units including metric and custom
- Measurement values can be recorded in automatic or manual modes
- Readings are easily exported to popular spreadsheets and other applications
- Step-by-step instruction feature for those wanting a more systematic approach to alignment



1-800-757-5383
www.pinpointlaser.com